

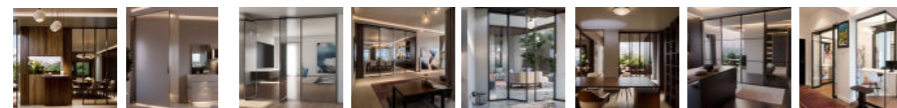
# ARCHITECTURAL SURFACE GLASS COLLECTION



TREP+

# GLASS COLLECTION

“Surface Glass Collection” è la nostra collezione di sistemi di chiusura in vetro e alluminio. Proiettati su un gusto moderno e contemporaneo e caratterizzati da essenzialità, leggerezza e luminosità. E’ un insieme di sistemi di apertura, scorrevoli, a bilico, a libro e battenti, ora integrati nel progetto “Architectural Surfaces”. La combinazione di questi elementi architettonici ha la capacità di proporre soluzioni per rendere i sistemi di apertura parte di un progetto strutturato, offrendo un’ampia gamma di arredi dalle atmosfere prestigiose e contemporanee. Esplora alcuni dei nostri progetti ed immergiti in un’atmosfera di bellezza e design contemporaneo: scopri “Architectural Surfaces”



*“Surface Glass Collection” our collection of glass and aluminum closing systems. Projected on a modern and contemporary taste and characterized by essentiality, lightness and brightness. It is a set of opening, sliding, pivoting, folding and swing systems, now integrated into the “Architectural Surfaces” project. The combination of these architectural elements has the ability to propose solutions to make the opening systems part of a structured project, offering a wide range of furnishings with prestigious and contemporary atmospheres. Explore the projects and immerse yourself in the beauty of contemporary project: discover “Architectural Surfaces”*



SURFACE WALL

TREP+



SURFACE PIVOT

TREP+





SURFACE GLASS TRATTO

TRE P+



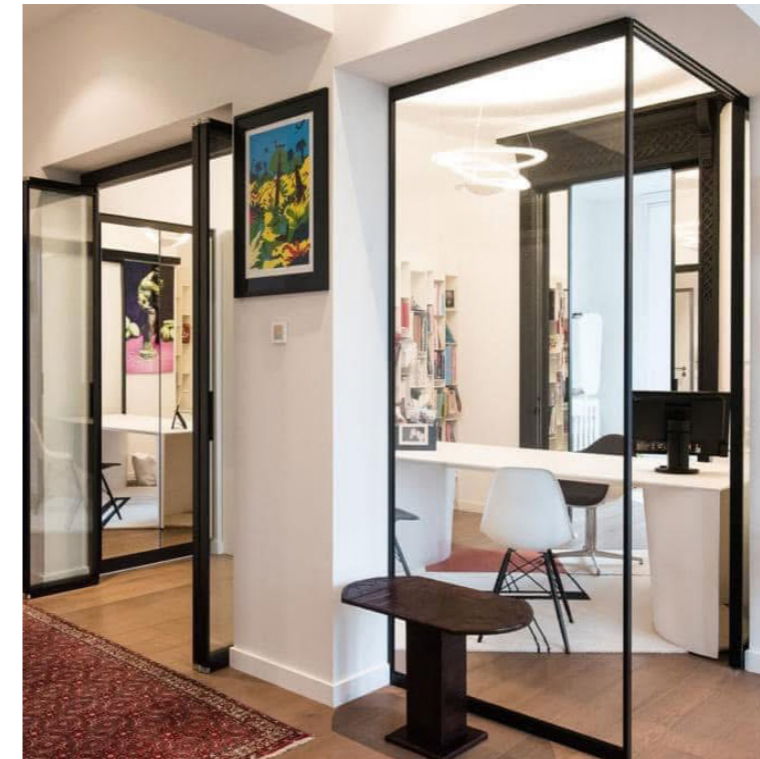
# SURFACE FOLDING



SURFACE FOLDING



SURFACE GLASS



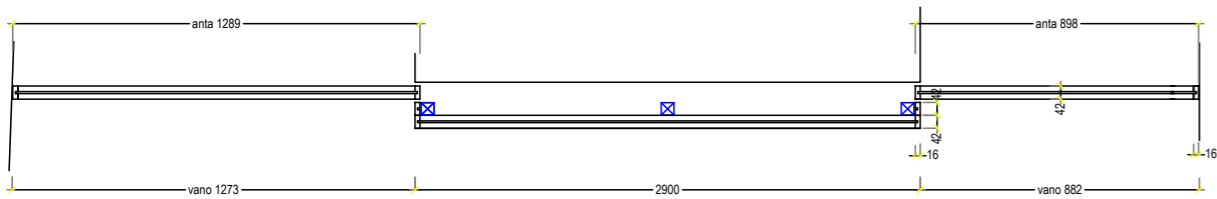
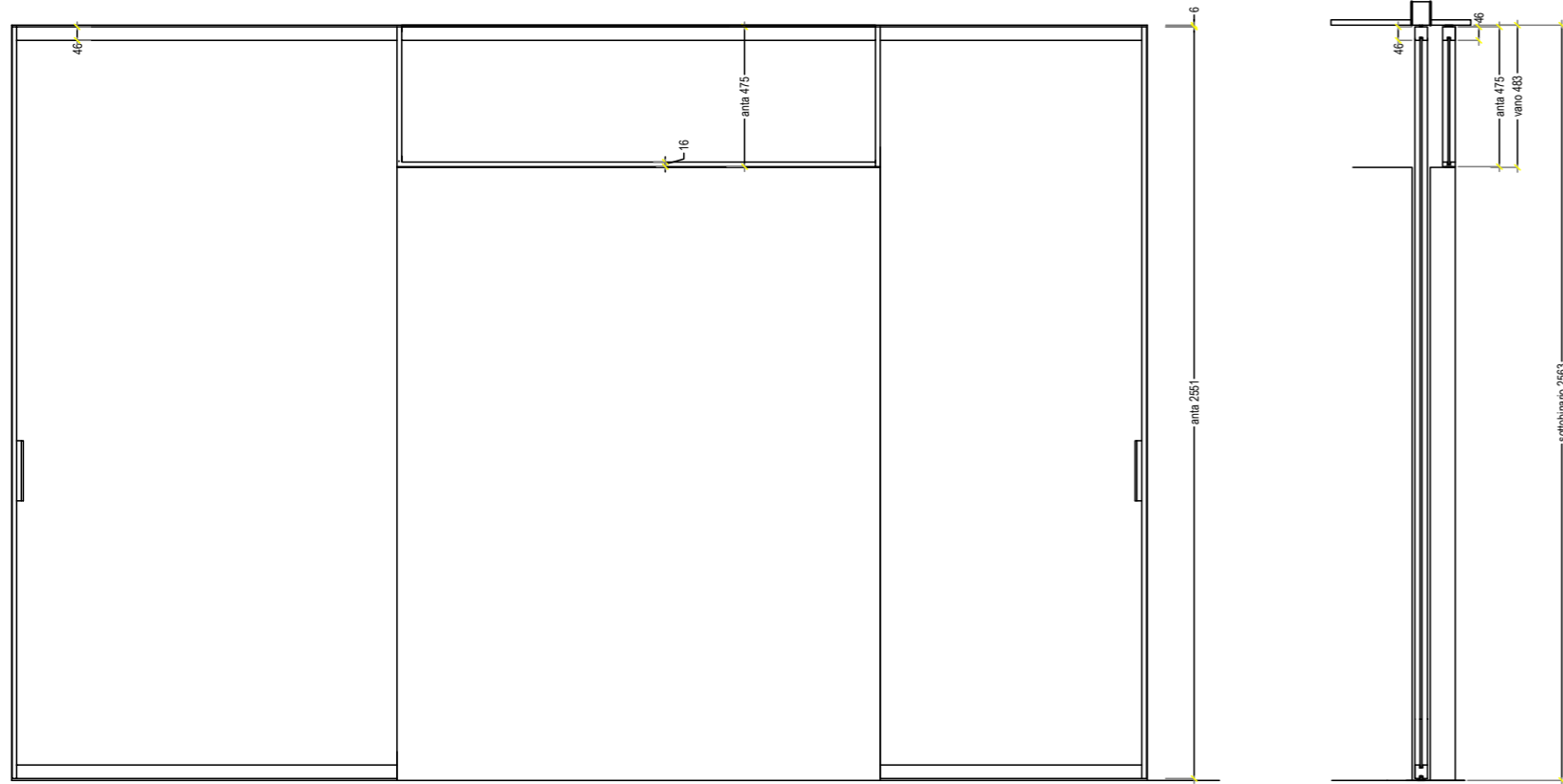
SURFACE WALL



SURFACE GLASS + ENDLESS

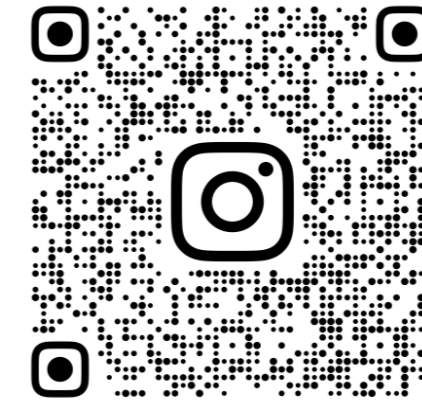


# SCHEDA TECNICA - TECHNICAL SHEET



TREP+

TREP+ srl  
Showroom  
Via S'Alessandro,153/155  
22066 Mariano Comense (CO) - IT  
T +39 0362 861120 \_ F +39 0362 310292  
info@trep-trepiu.com \_ www.trep-piu.com



@TREPTREPIU

www.trep-piu.com



TREP+ srl  
Sede Legale  
Via Alessandro Manzoni, 37  
20900 Monza (MB) - IT  
T +39 0362 861120 \_ F +39 0362 310292  
info@trep-trepiu.com \_ www.trep-piu.com